

At the end of the Project's useful life, Junction will either take necessary steps to continue operation of the Project (such as retrofitting) or will decommission the Project and remove facilities.

Decommissioning activities will include:

- Removing the solar arrays, transformers, electrical collection system, fencing, lighting and substations, and possibly the O&M facility (the O&M facility may be useful for other purposes);
- Removal of underground cables to a depth of twenty-four inches;
- Removal of buildings and ancillary equipment to a depth of four feet;
- Removal of surface road material and restoration of the roads to substantially the same physical condition that existed immediately before construction, unless the landowner requests in writing that the access roads be retained;
- Site restoration and reclamation to the approximate original topography that existed prior to construction of the facility with topsoil respread over the disturbed areas at a depth similar to that in existence prior to the disturbance;
- Grading, adding topsoil, and reseeding according to the NRCS technical guide recommendations and other agency recommendations, areas disturbed by the construction of the facility or decommissioning activities, unless the landowner requests in writing that the access roads be retained; and
- Standard decommissioning practices would be utilized, including dismantling and repurposing, salvaging/recycling, or disposing of the solar energy improvements, and restoration.

Decommissioning is estimated to take two to three months to complete and the decommissioning crew will ensure that all equipment is recycled or disposed of properly.

The removal and disposal details of the Project components are:

- Modules: modules are inspected for physical damage, tested for functionality, and removed from racking. Functioning modules are packed and stored for reuse (functioning modules may produce power for another 25 years or more). Non-functioning modules are packed and palletized and sent to the manufacturer or a third party for recycling or another appropriate disposal method.
- Racking: racking are uninstalled, sorted, and sent to metal recycling facility.
- Poles: steel poles are removed and sent to a recycling facility. Holes are backfilled.
- Wire: belowground wire is abandoned in place at depths greater than four feet.
- Conduit: aboveground conduit is disassembled onsite and sent to a recycling facility.
- Junction boxes, combiner boxes, external disconnect boxes, etc.: sent to electronics recycler.
- Inverter: sent to manufacturer and/or electronics recycler. Functioning parts can be reused.
- Concrete pad(s): sent to concrete recycler.
- Fence: sent to metal recycling facility.
- Computers, monitors, hard drives, and other components: sent to electronics recycler. Functioning parts can be reused.

After all equipment is removed, the facility will be restored. Holes created by poles, concrete pads, and other equipment will be filled in with soil to existing conditions and seeded. This will include the revegetation.

ORDINANCE NO. # 05-19-002

WHEREAS, the Lee County Board desires to act upon Petition No. 19-P-1545 by Petitioner Junction Solar, LLC. The parcel identification numbers are: 17-05-25-100-007; 17-05-25-200-002; 17-05-25-200-003; 17-05-25-400-002; 17-05-25-400-003; 17-05-36-100-001; 17-05-36-300-004; 17-05-36-200-001; 01-06-31-100-001; 01-06-31-300-008; and 01-06-31-300-010. The parcels are located in Reynolds and Alto Townships. The Petitioner is requesting special use permit for the purpose of developing a commercial solar energy system.

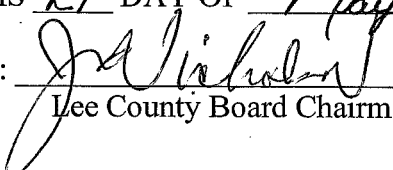
WHEREAS, the necessary public hearing was held before the Zoning Board of Appeals on the petition described which resulted in a recommendation to approve from the Zoning Board of Appeals for said Petition.

NOW, THEREFORE, BE IT ORDAINED by the Lee County Board that Petition No. 19-P-1545 (Junction Solar, LLC) be approved ~~denied~~ by the Lee County Board.

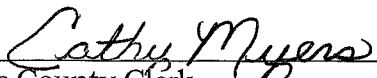
PASSED BY THE LEE COUNTY BOARD

THIS 21<sup>st</sup> DAY OF May, 2019.

BY:

  
Lee County Board Chairman

ATTEST:

  
Lee County Clerk

STATE OF ILLINOIS   )  
                                      ) SS  
COUNTY OF LEE        )

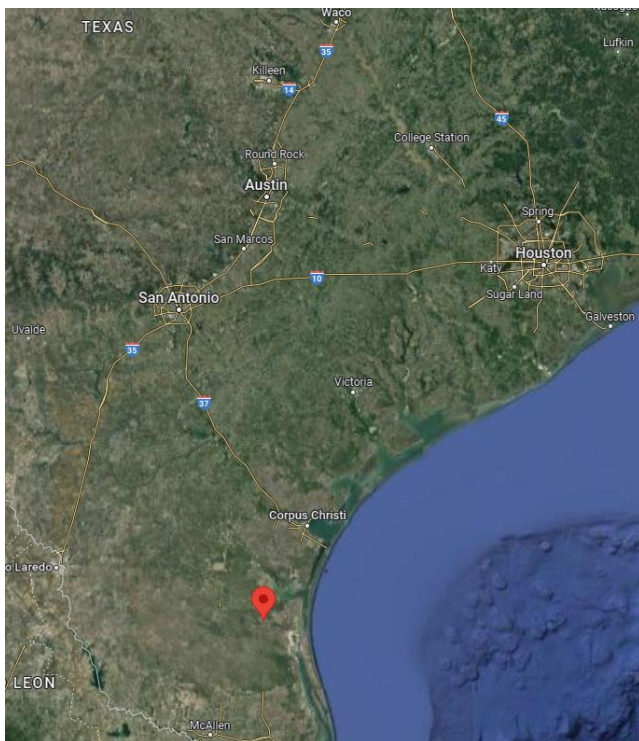
I, Cathy Myers, County Clerk and ex-officio Clerk of the Lee County Board,  
do hereby certify that said Board (approved) (denied) Petition No. 19-P-1545.

Given under my hand and seal of Lee County on May 21, 2019.

Cathy Myers  
Cathy Myers, Lee County Clerk



Approximate project location:  
 27°05'30.3"N 97°46'31.4"W

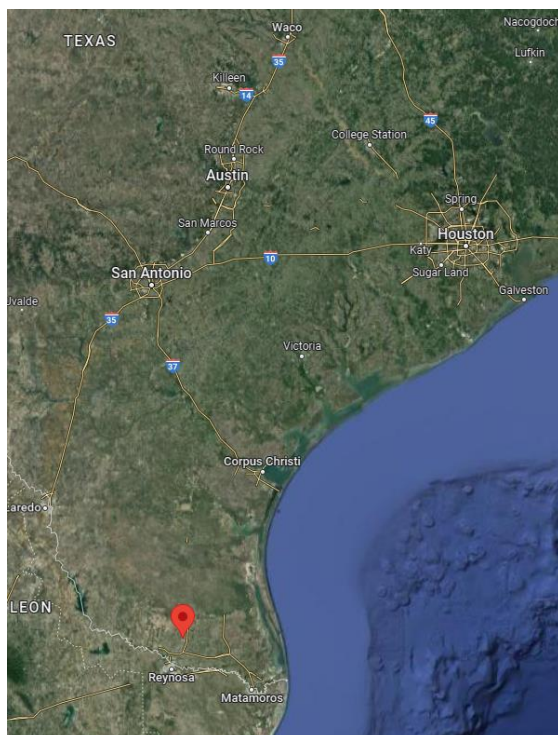


Ajo 345 kV Substation location

PROJECT SITE LOCATION MAP

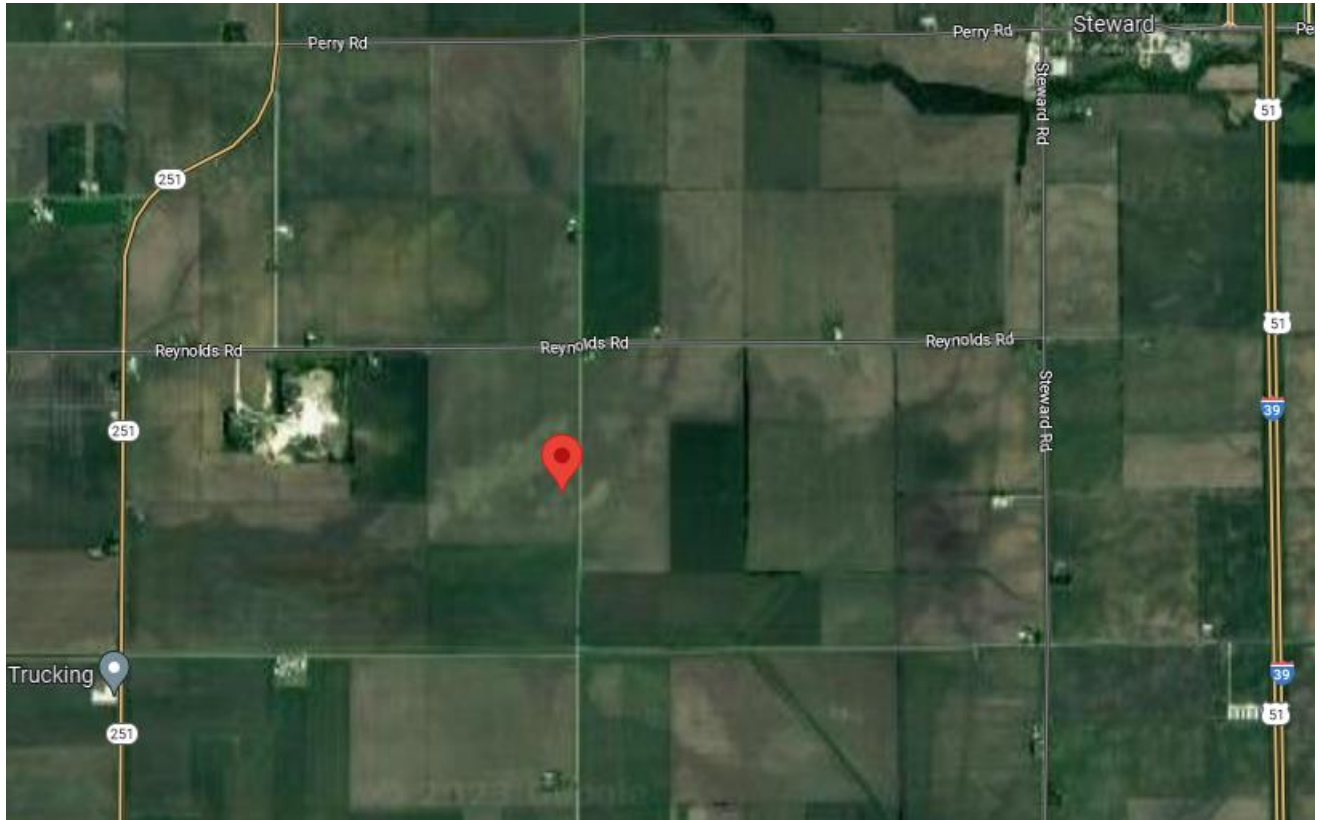


Approximate project location:  
26°20'41.8"N 98°11'21.7"W

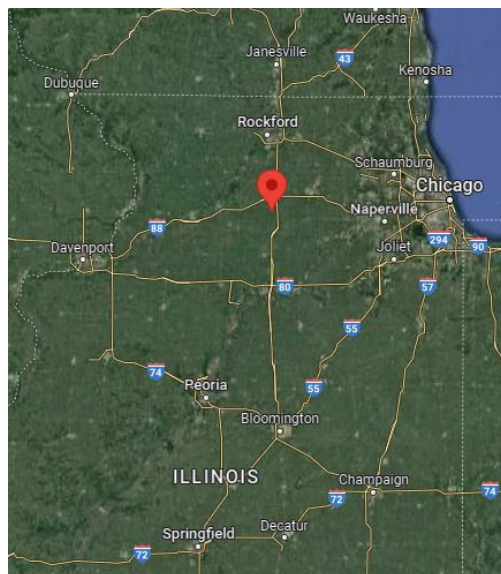


North Edinburg 345 kV Substation location

PROJECT SITE LOCATION MAP



Approximate project location:  
 41°49'31.51"N, 89° 3'16.96"W  
 Adjacent to Town Line Rd.



Lee County, IL project

PROJECT SITE LOCATION MAP